



# Organizational Chart 2021

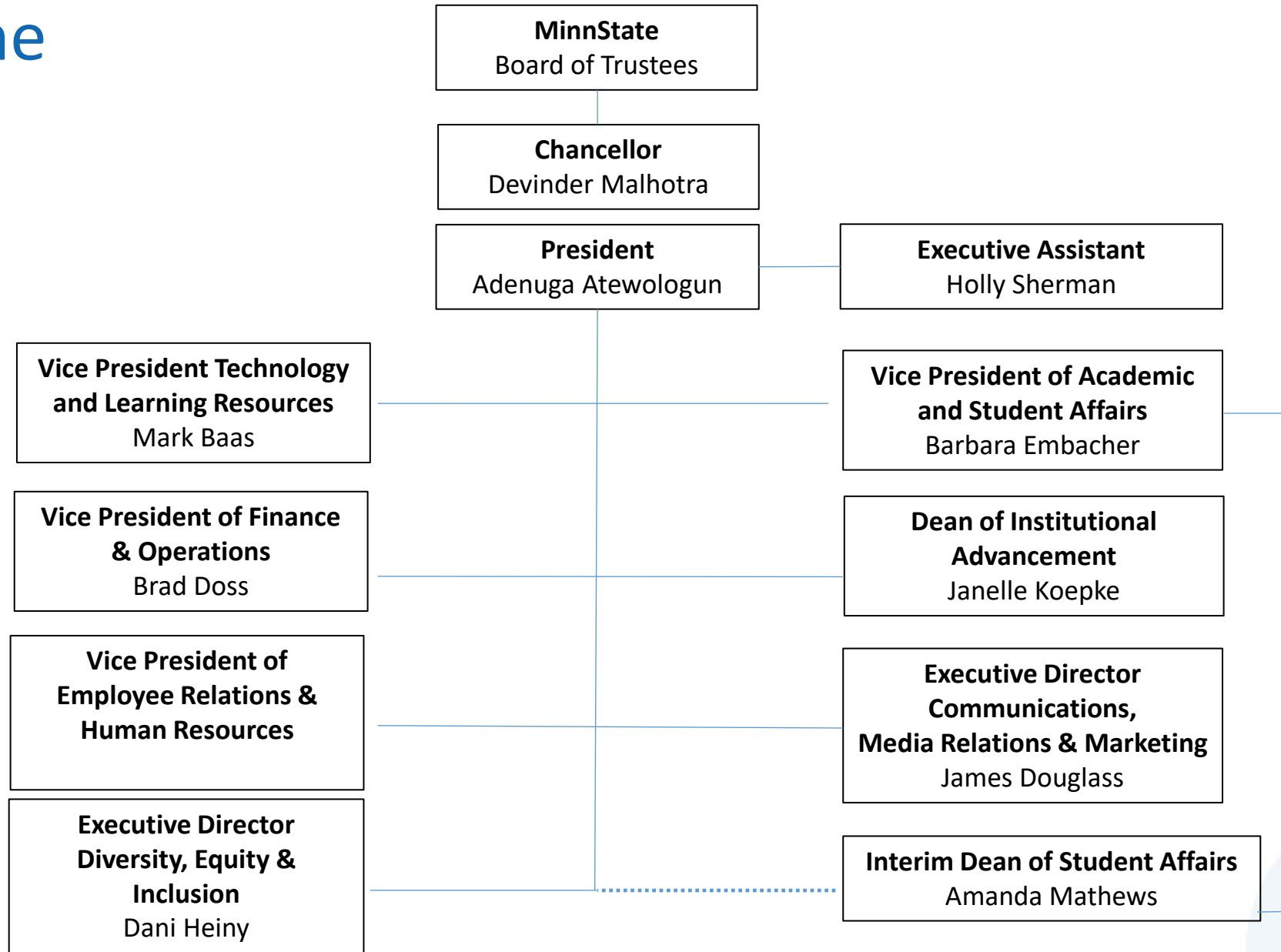


**RIVERLAND**  
Community College

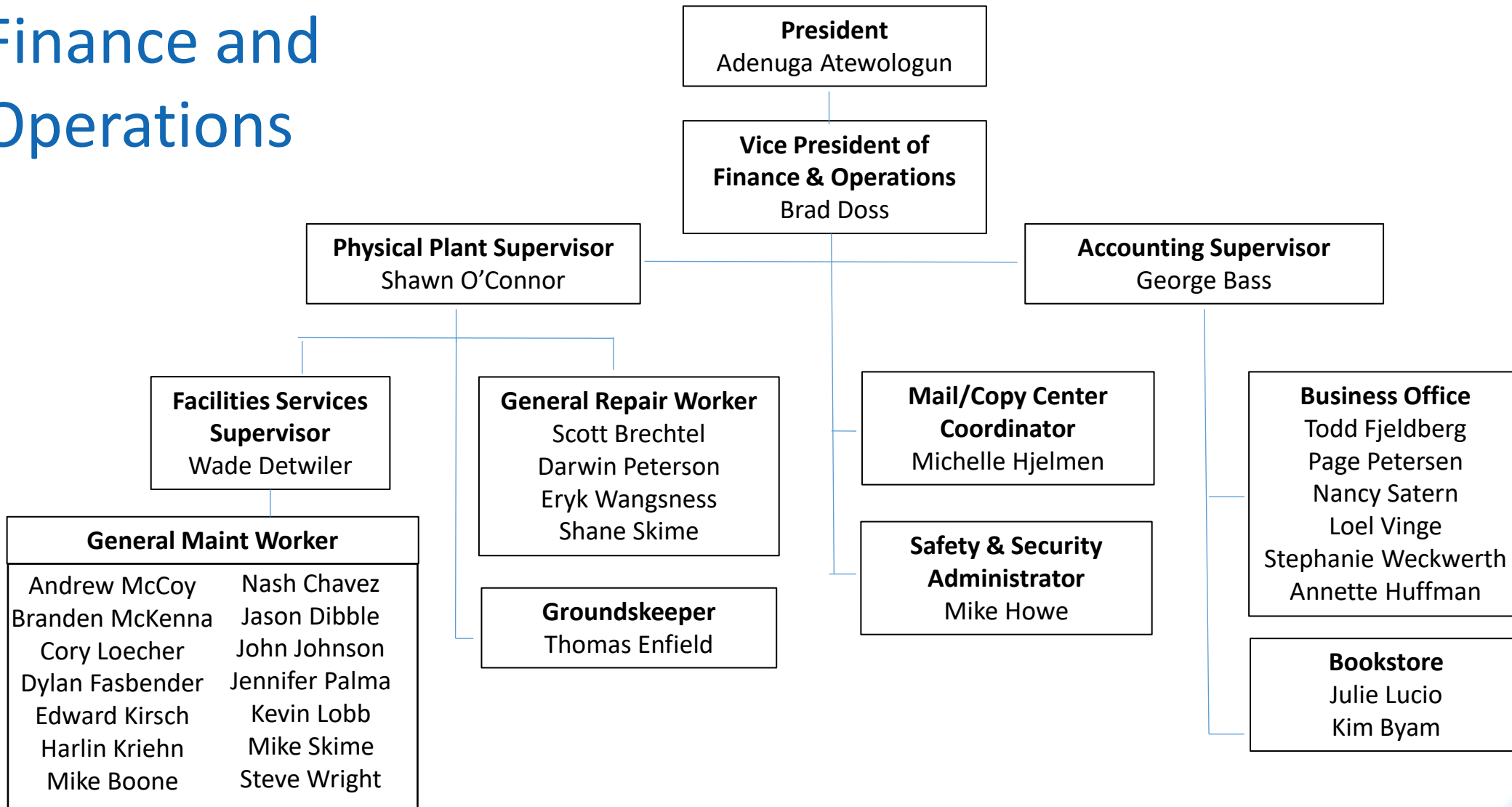


MINNESOTA STATE

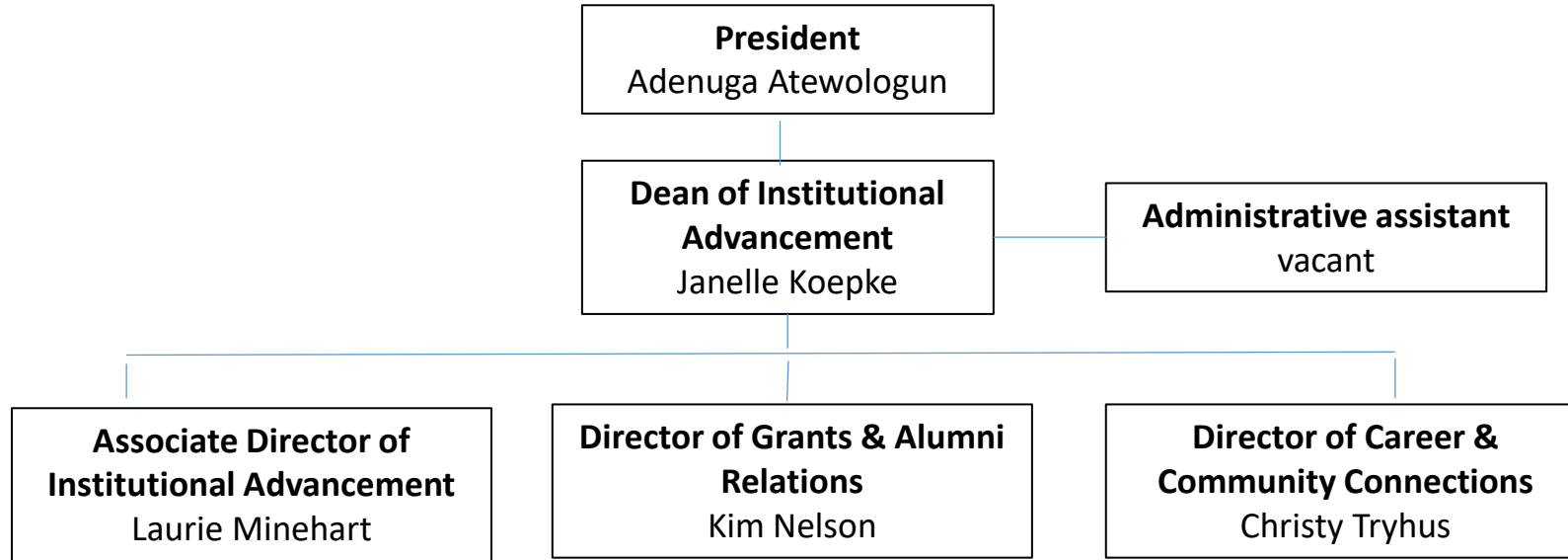
# Office of the President



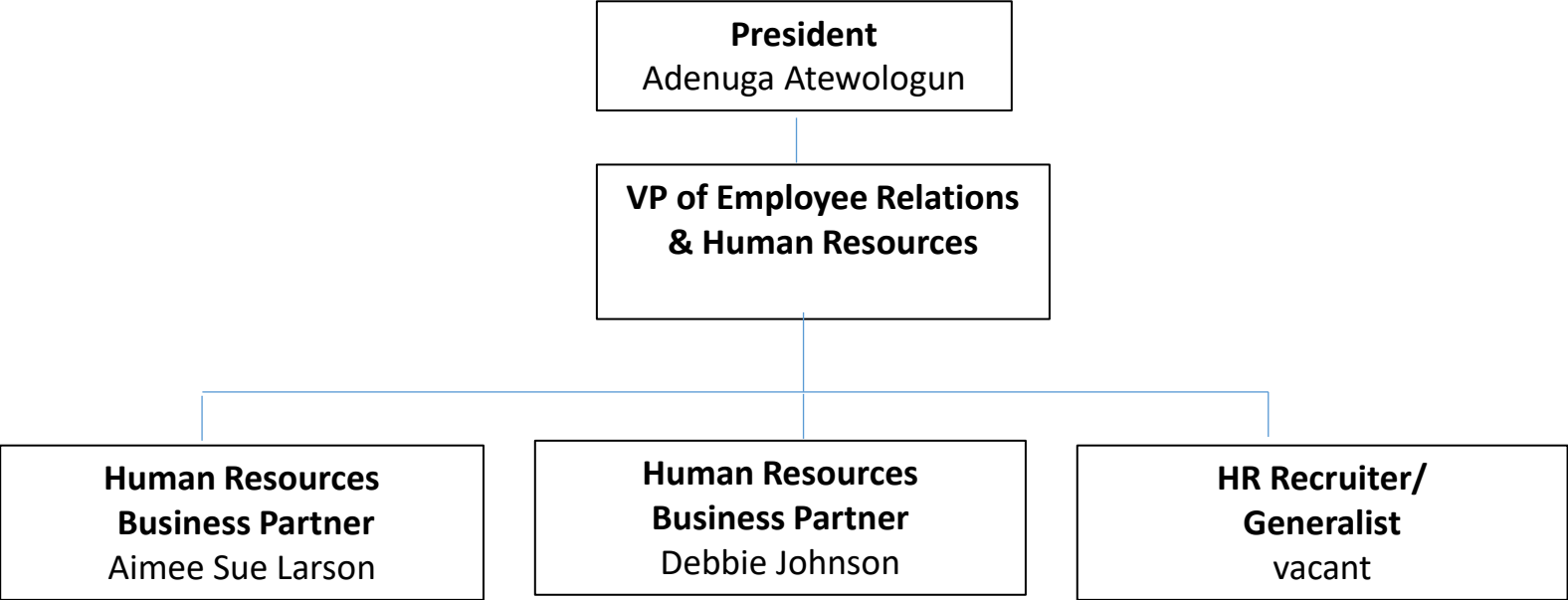
# Finance and Operations



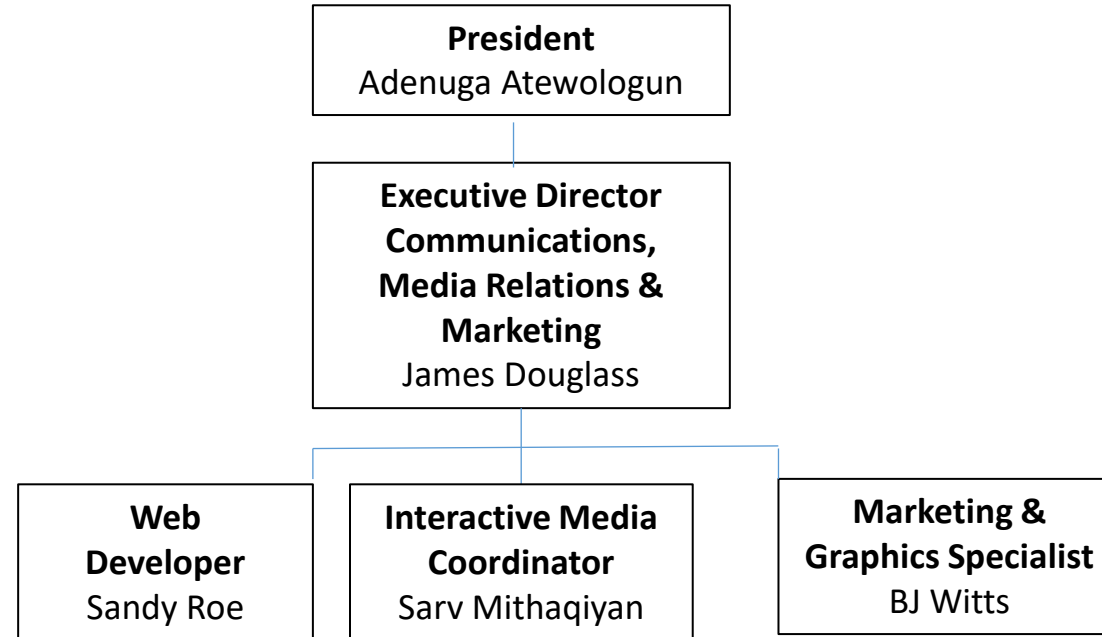
# Institutional Advancement



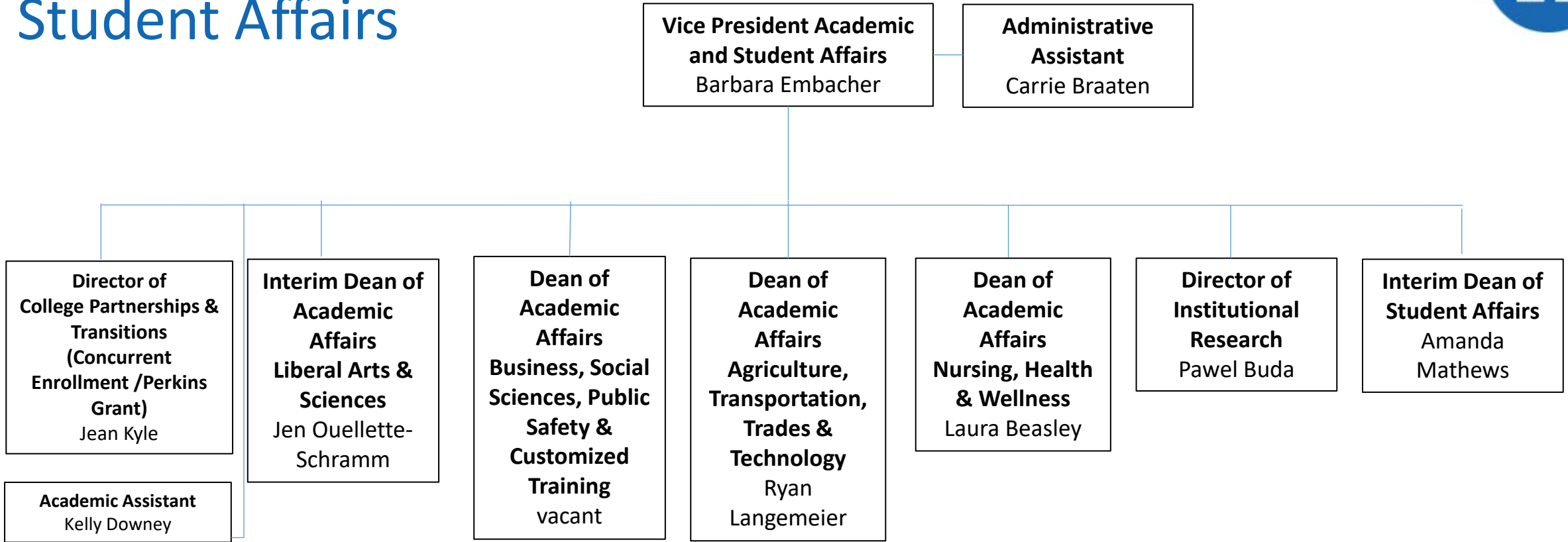
# Human Resources



# Communications, Media Relations & Marketing

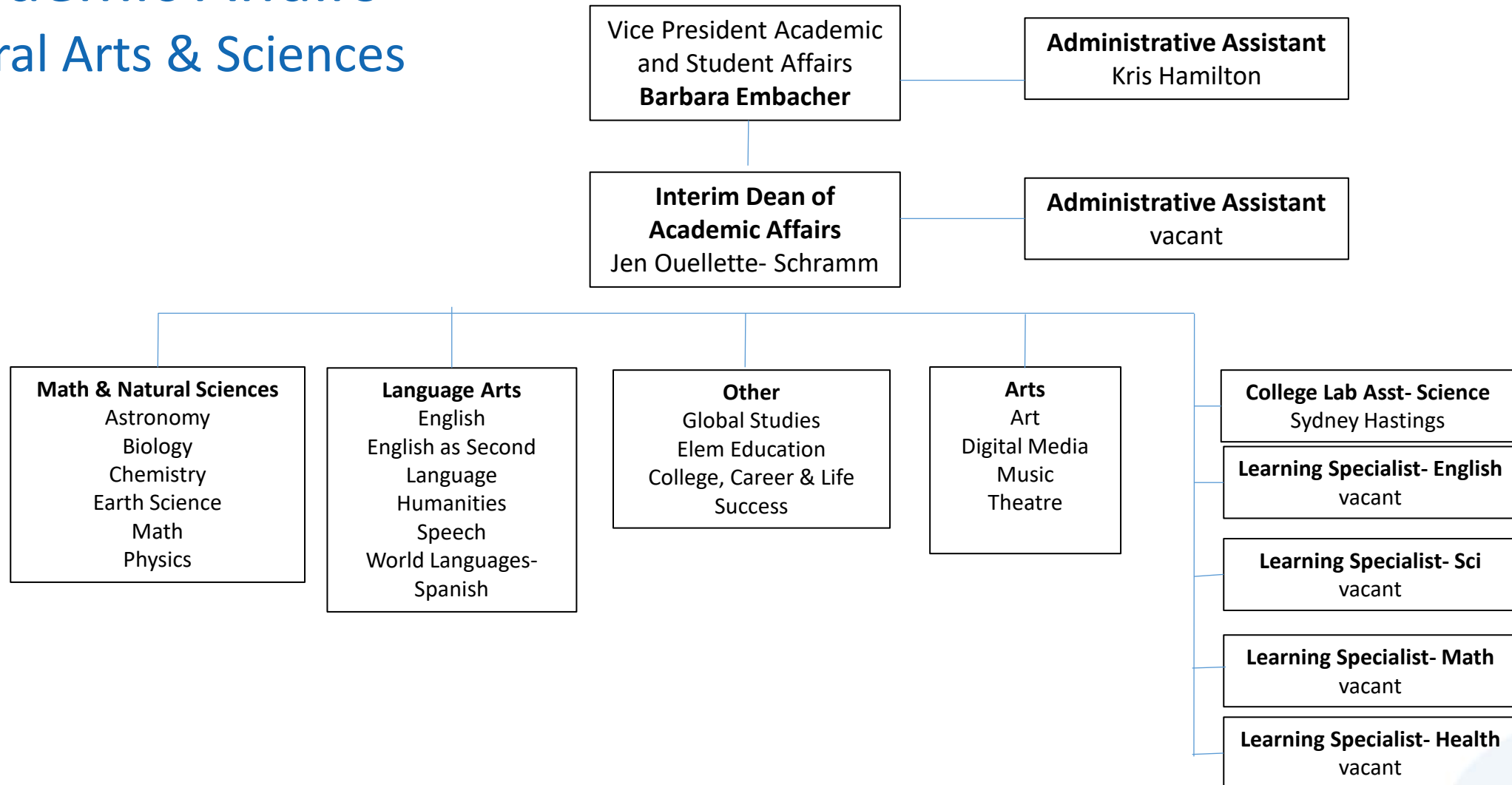


# Academic and Student Affairs



# Academic Affairs

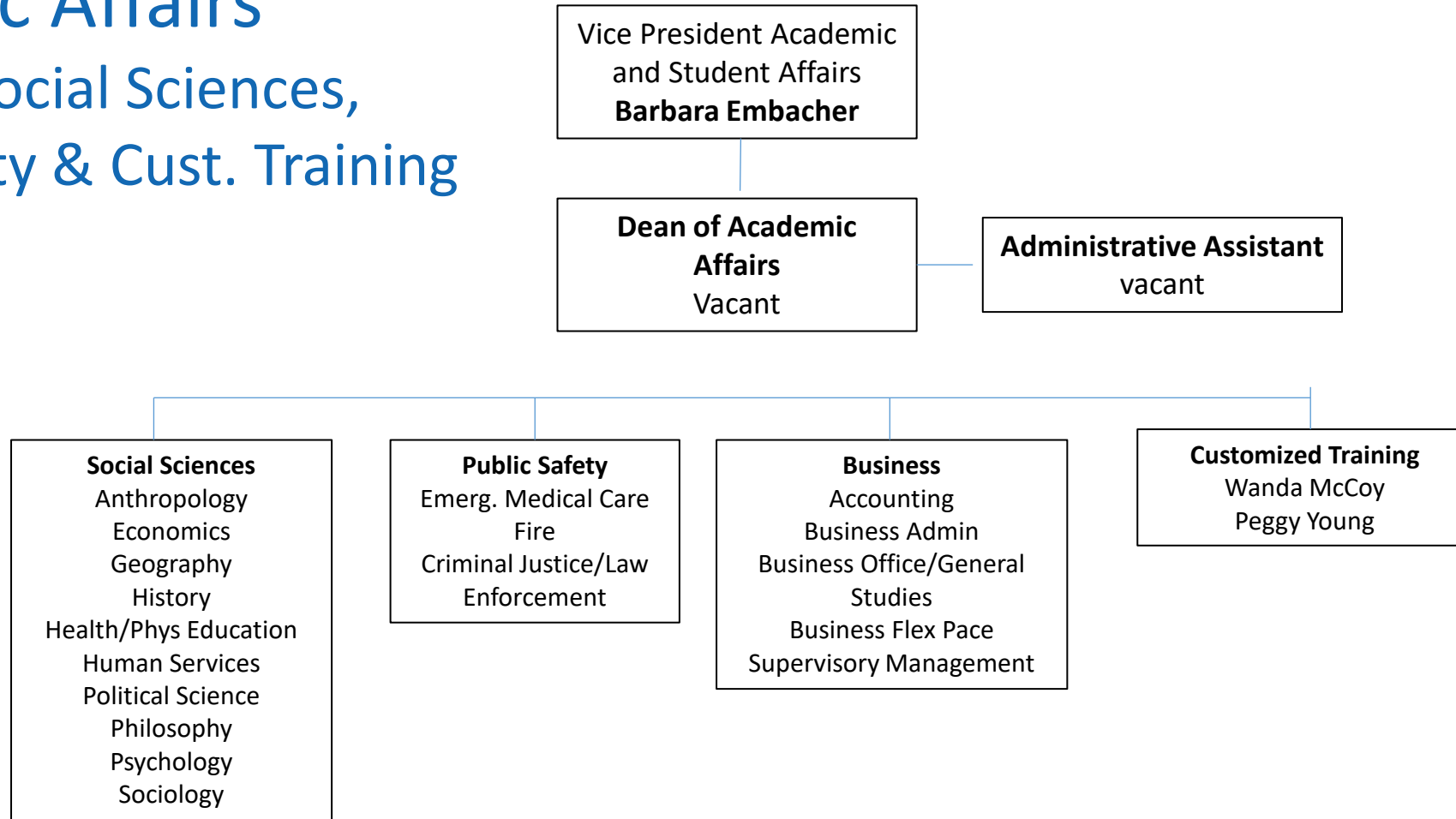
## Liberal Arts & Sciences





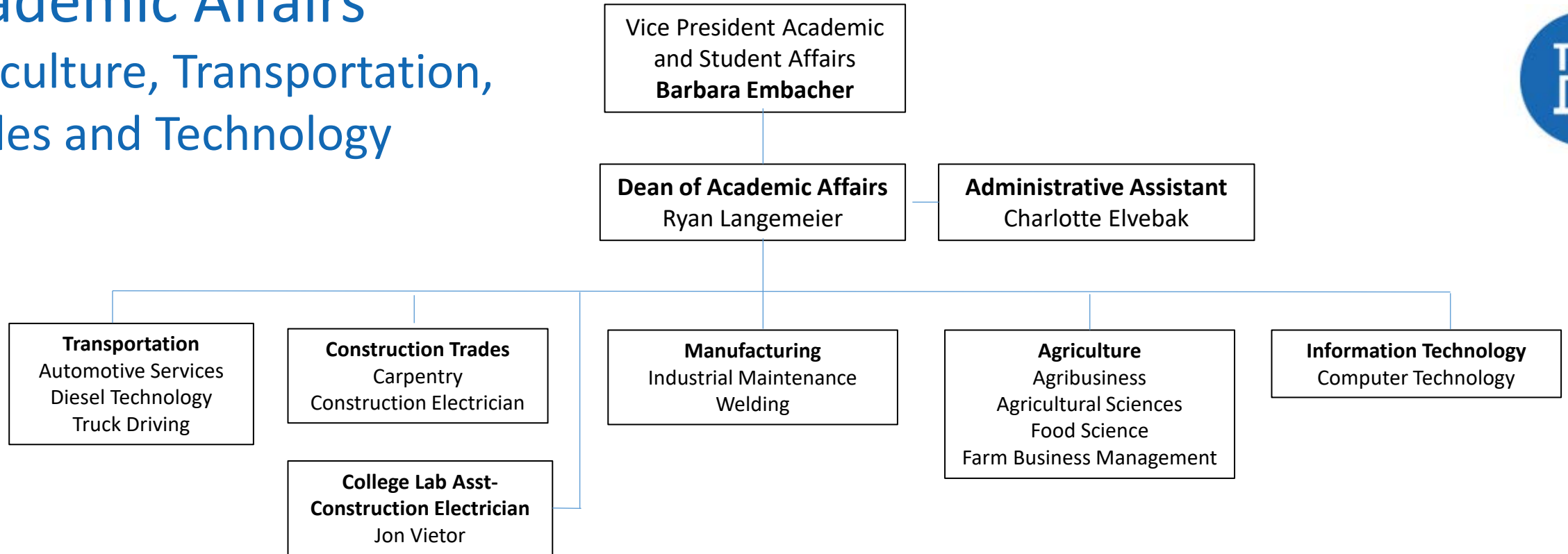
# Academic Affairs

Business, Social Sciences,  
Public Safety & Cust. Training



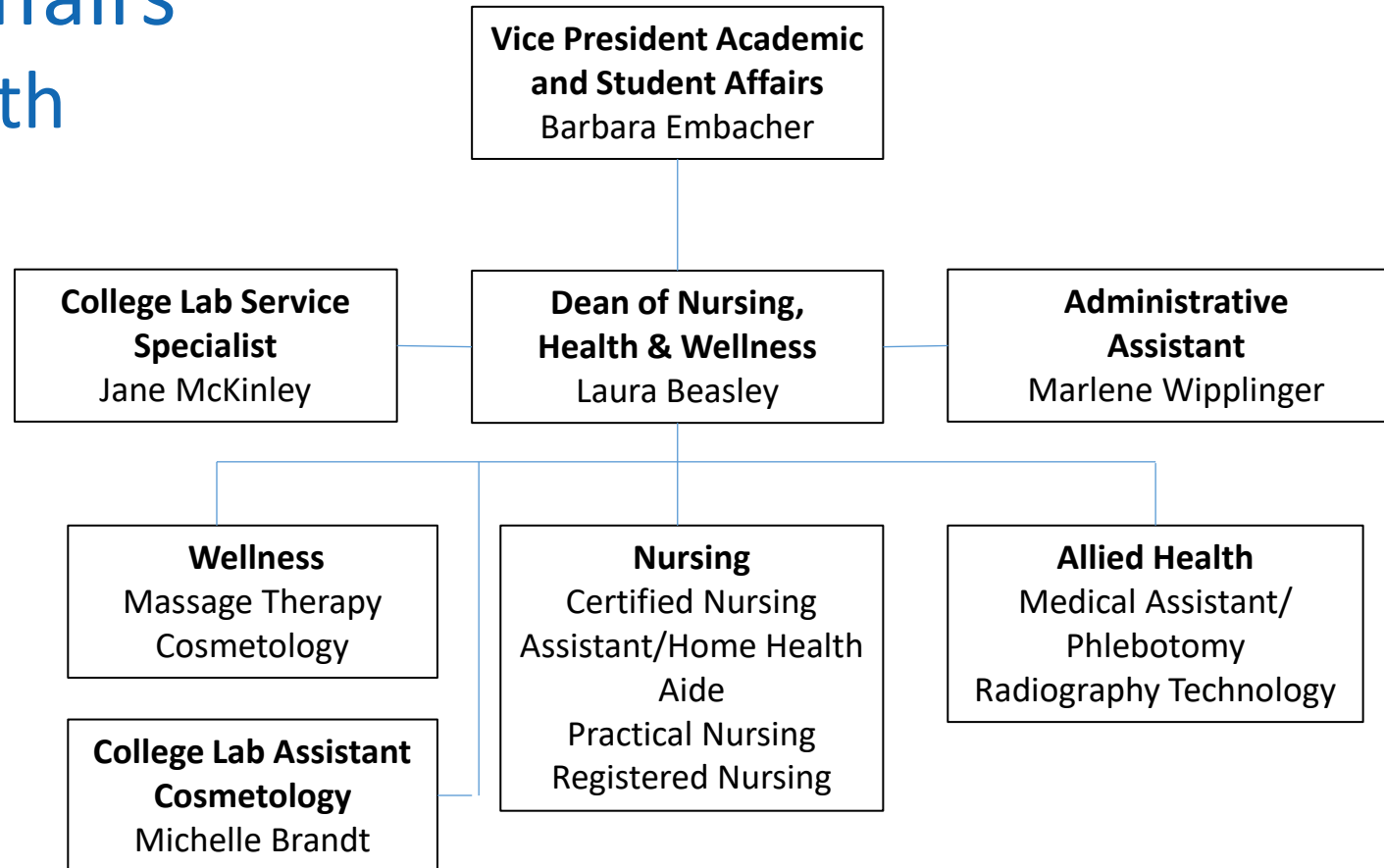
# Academic Affairs

## Agriculture, Transportation, Trades and Technology

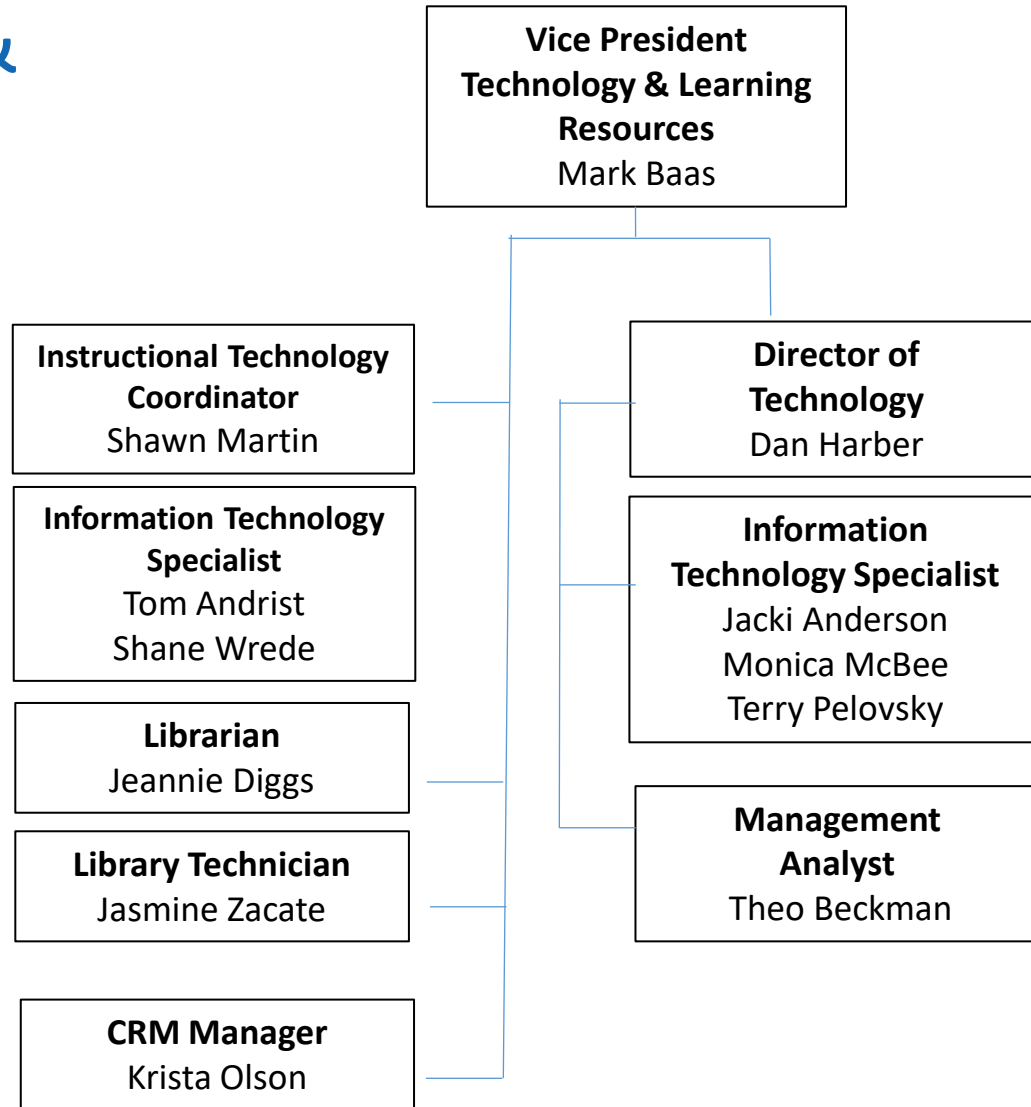




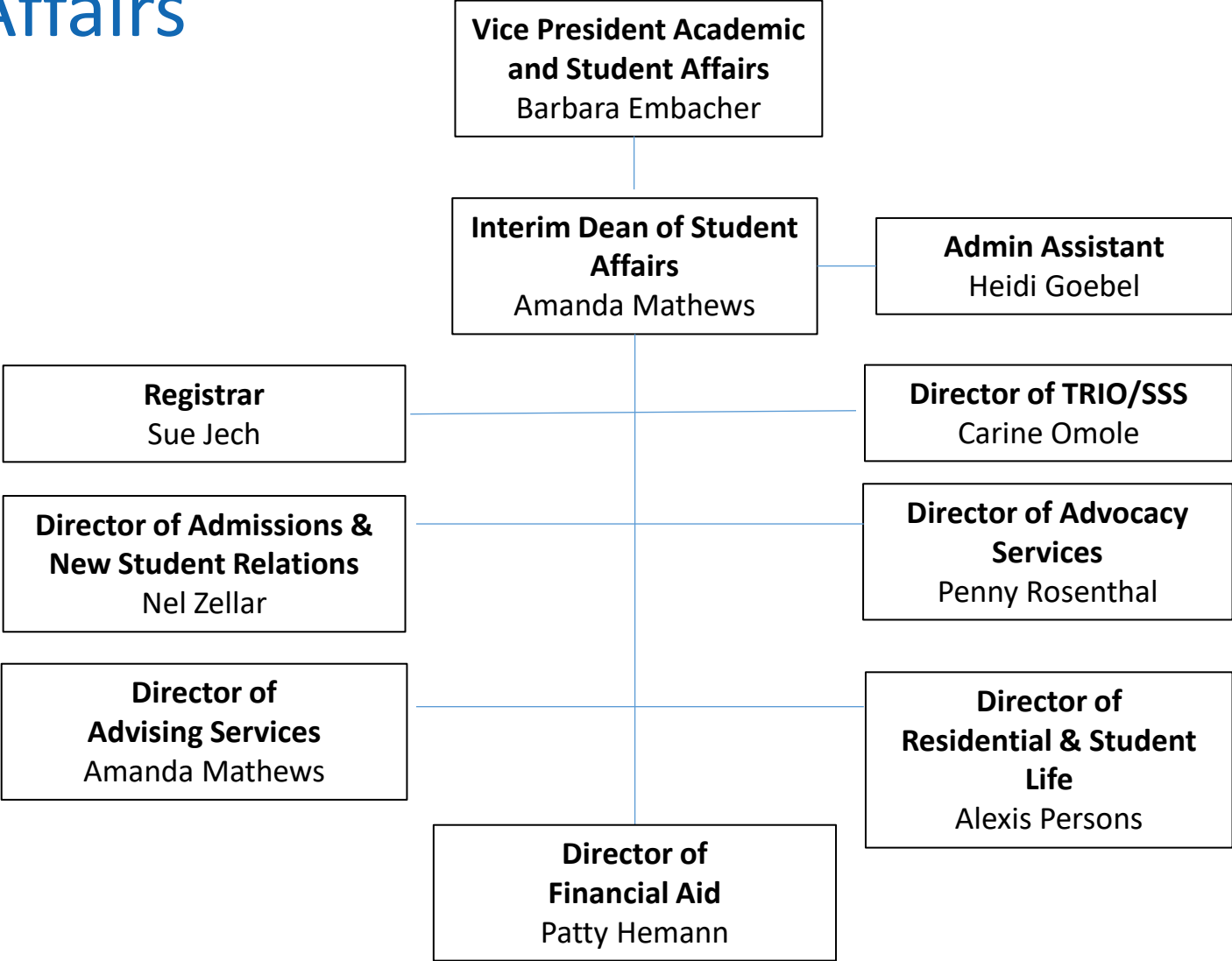
# Academic Affairs Nursing, Health And Wellness



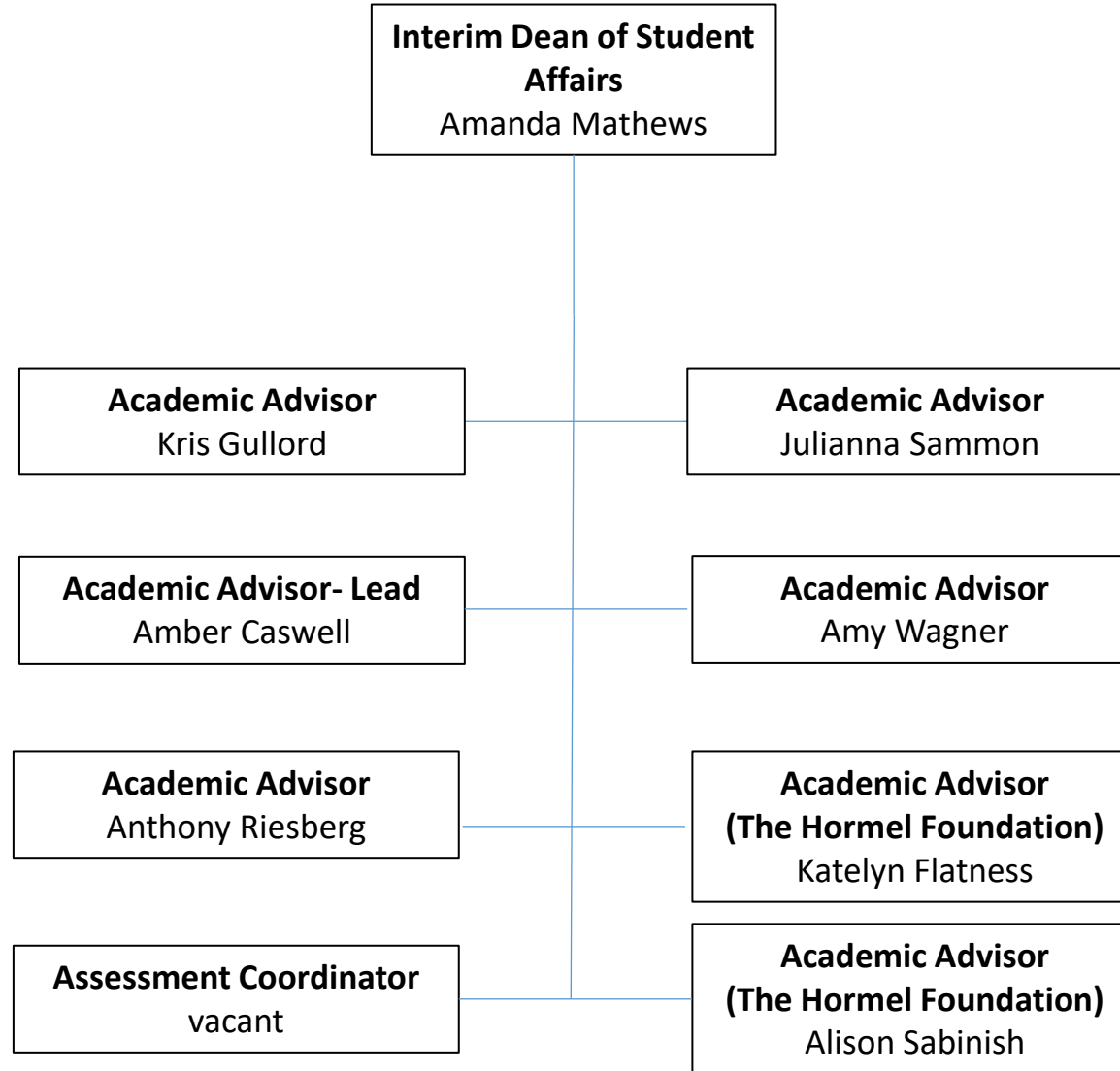
# Technology & Learning Resources



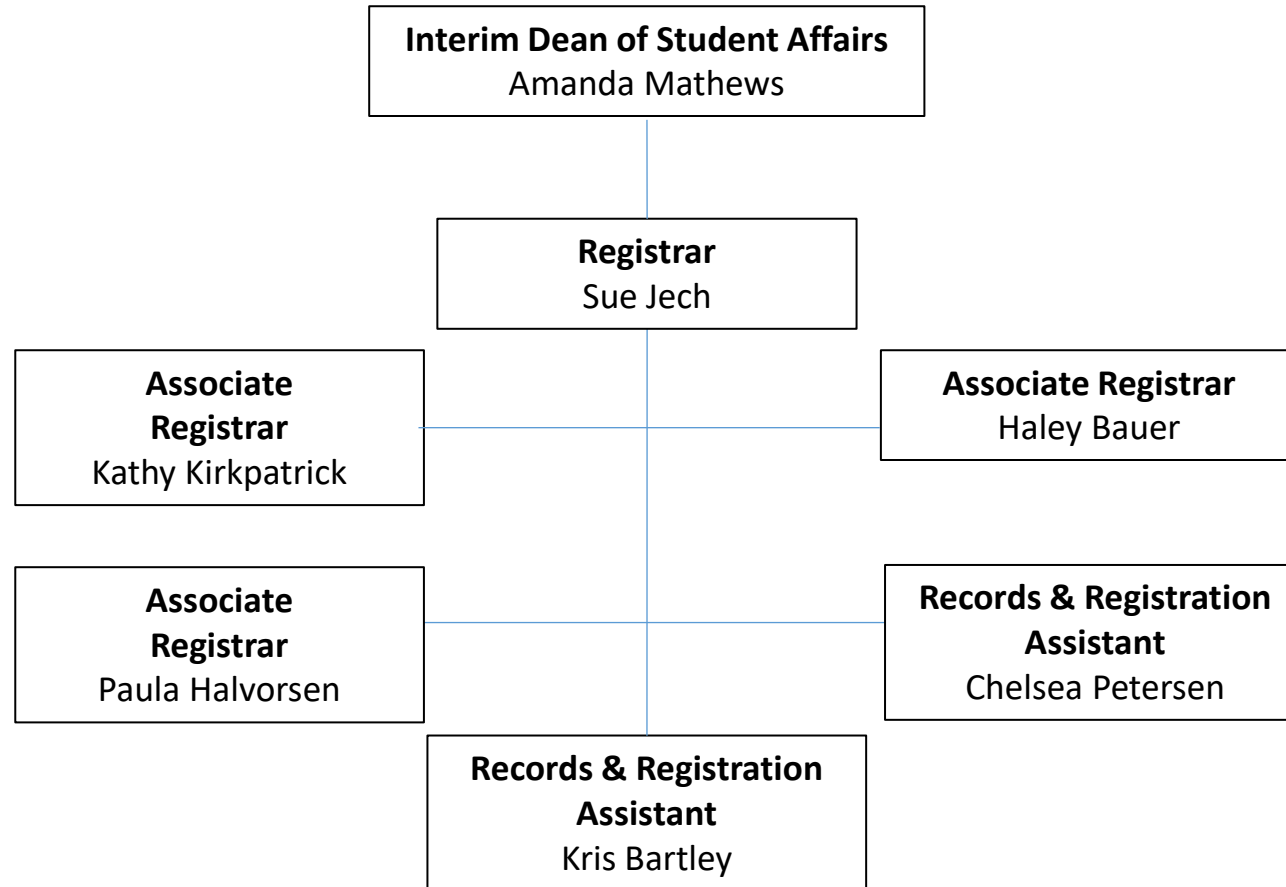
# Student Affairs



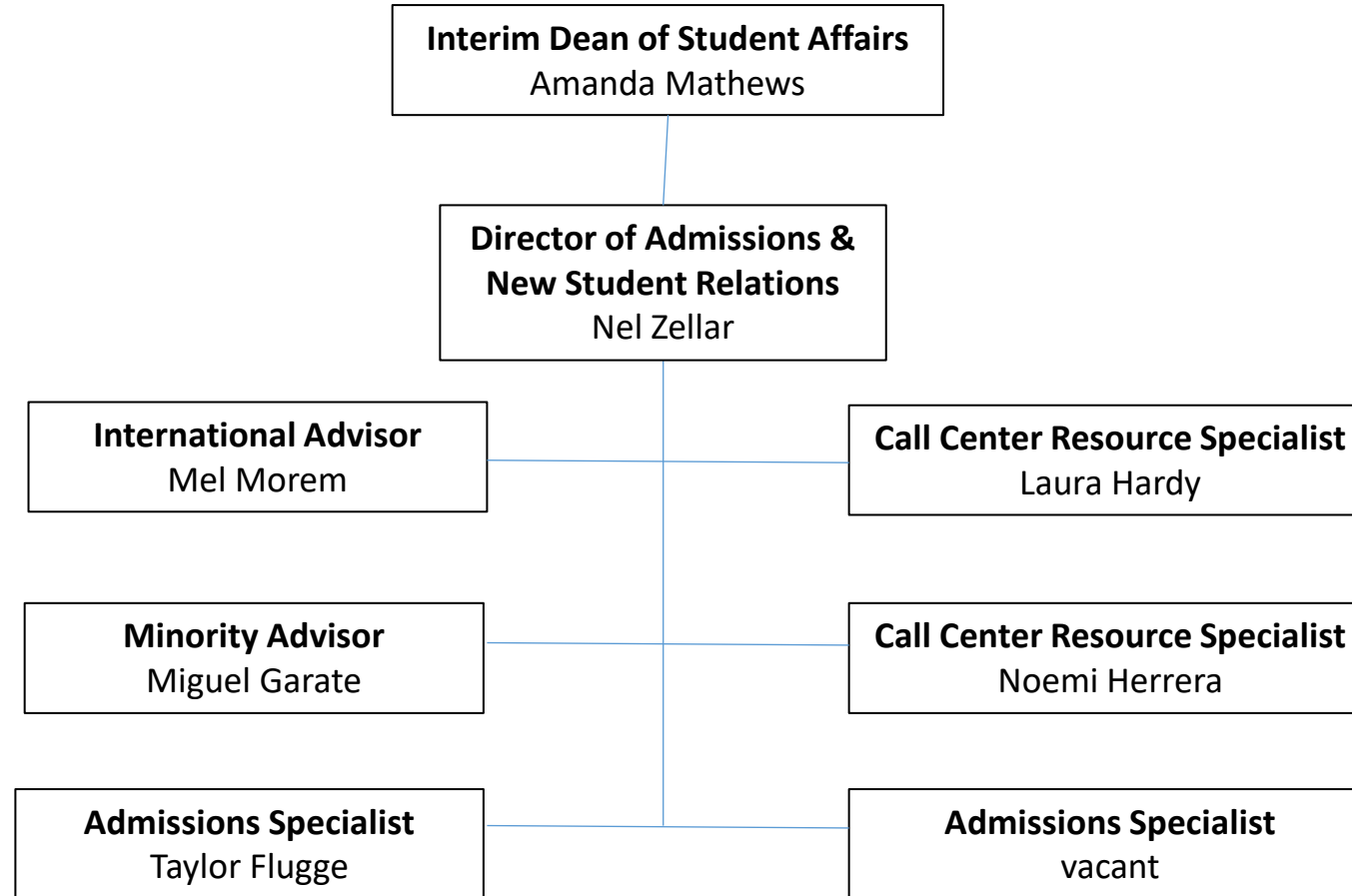
# Advising Services



# Records & Registration

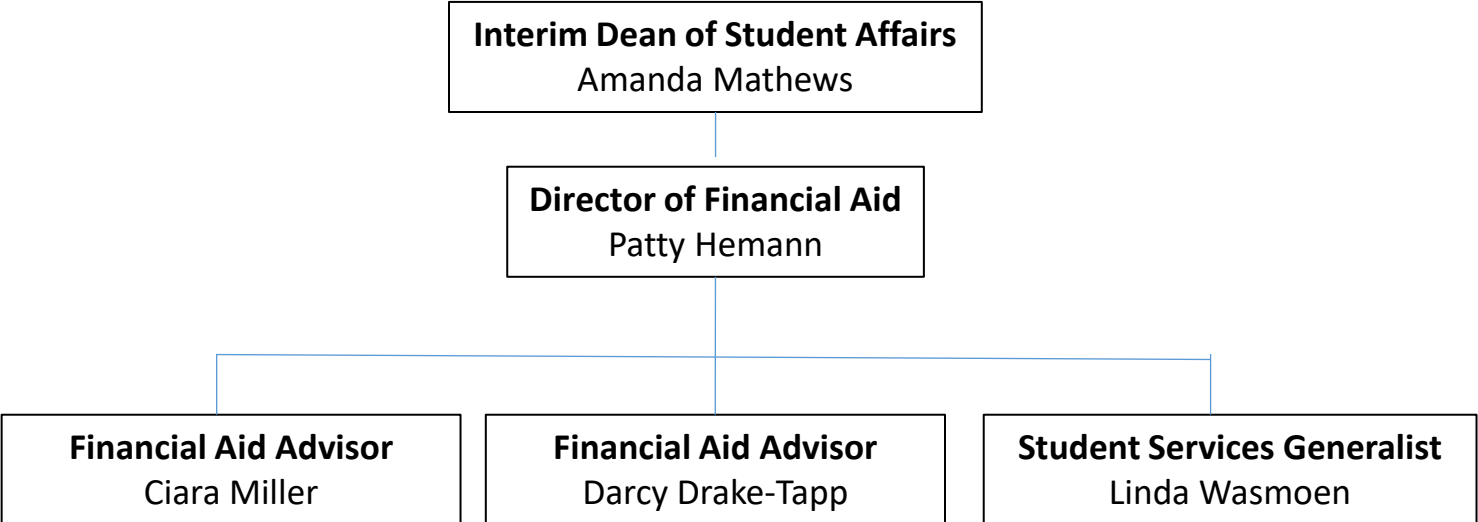


# Admissions

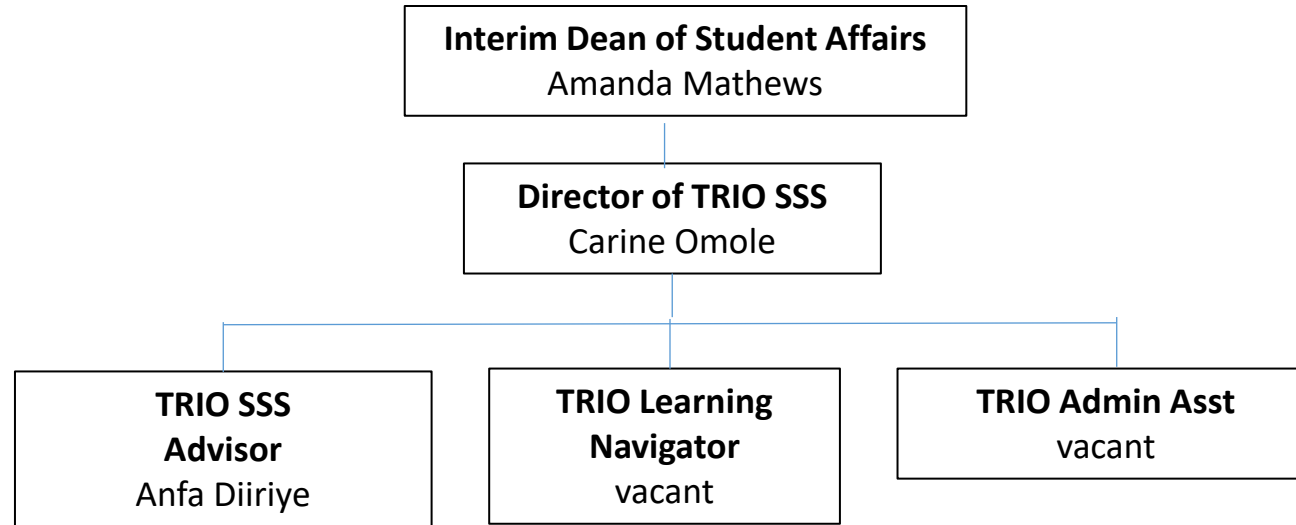




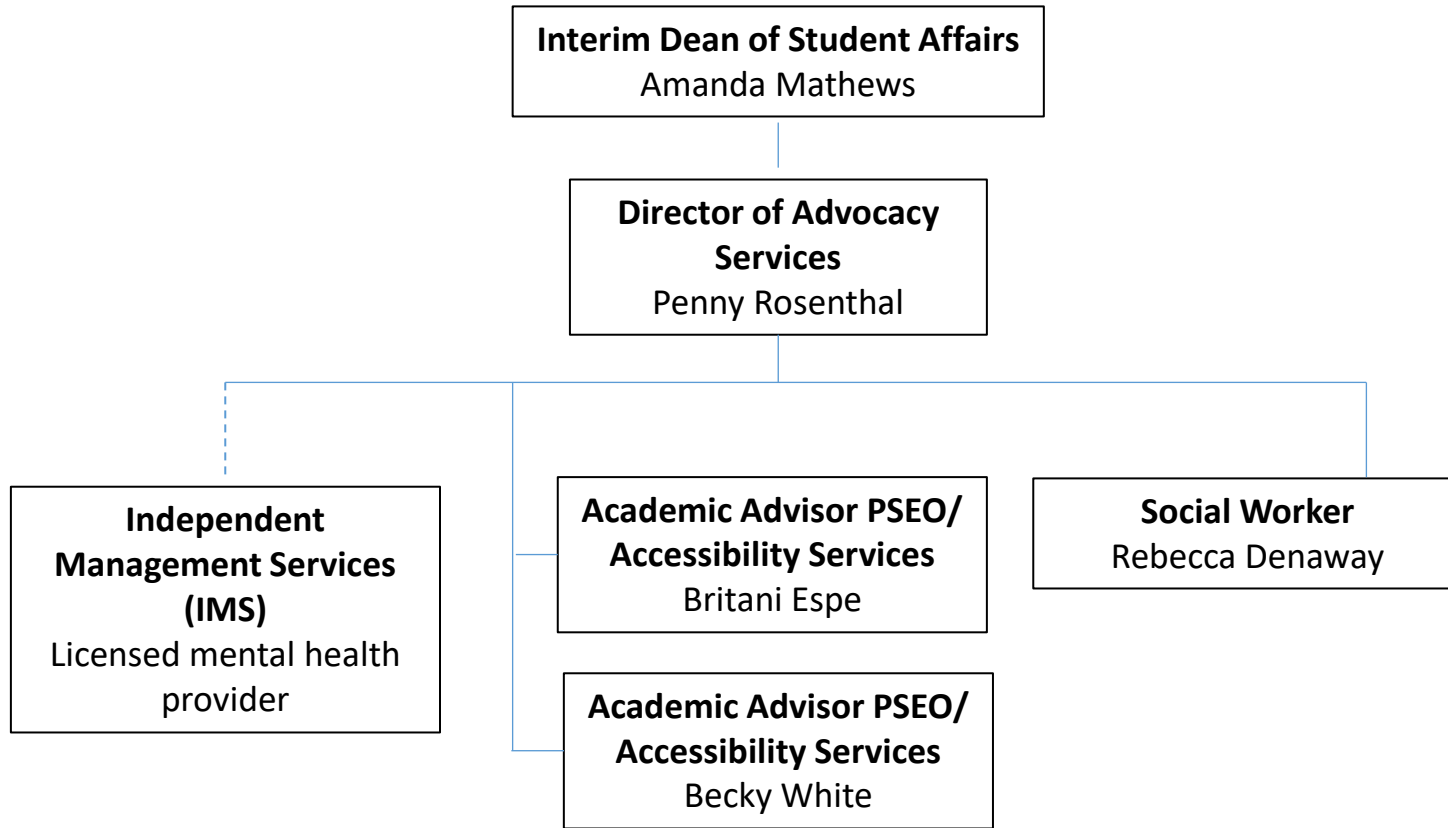
# Financial Aid



# TRIO/ Student Support Services



# Advocacy Services



# Residential & Student Life

